

**droplet**<sup>®</sup>  
pen needles

# STERILE, SINGLE-USE PEN NEEDLES

Intended for use with pen injector devices  
for the subcutaneous injection of drugs



## Product intended use

Sterile, single-use pen needles intended for use with pen injector devices for the subcutaneous injection of drugs.

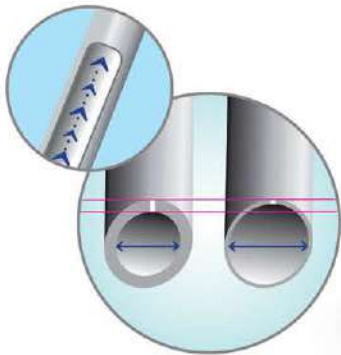
## Product features

Our pen needles proactively address:<sup>1</sup>

- easy adjustment
- greater convenience
- quick and comfortable use

### Smart

Thin wall with bigger inner diameter provides fast and adequate insulin flow.<sup>2</sup>



### Soft

Precise 3-bevel grinding designed for smooth and gentle injection.<sup>3</sup>



Unique „in-house” lubrication method DROPLICON™ for smooth and gentle injection.<sup>1</sup>



### Simple

Easy adjustment of pen needle on pen injector.<sup>1</sup>

Outer cap shape with ribs to remove the protective cap.<sup>4</sup>



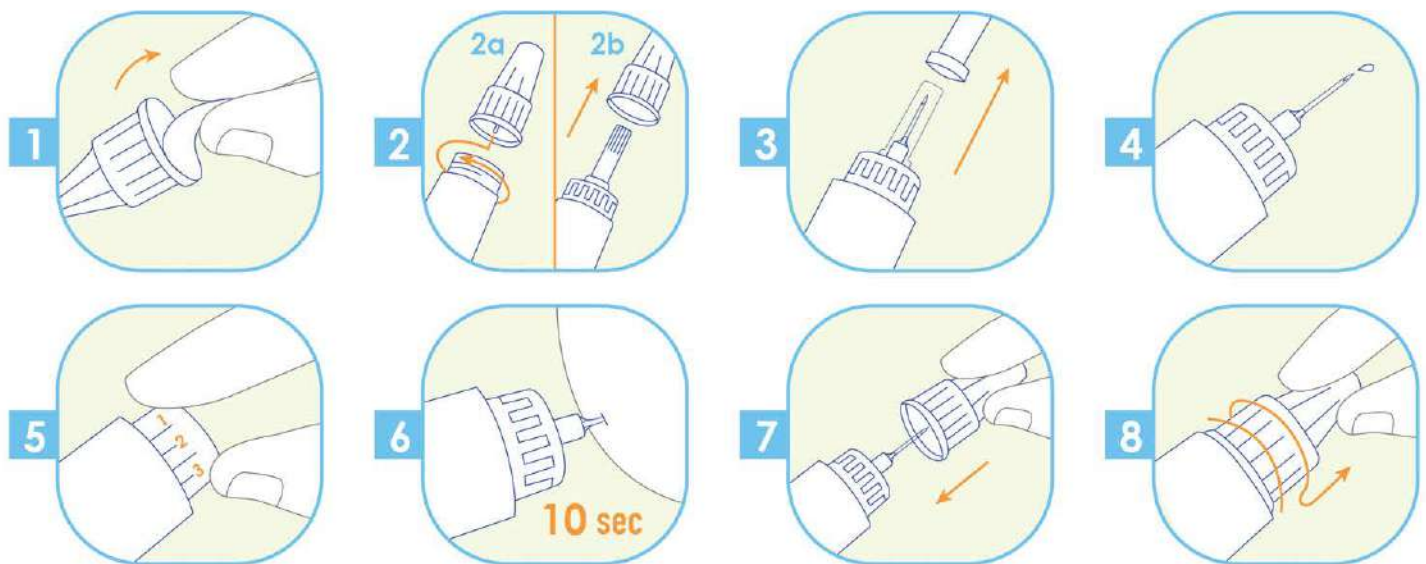
## Diabetes facts

Diabetes is a disease in which the body is unable to properly use and store glucose. Glucose backs up in the bloodstream — causing one's blood glucose (sometimes referred to as blood sugar) to rise too high.

Diabetes can cause serious health complications including heart disease, blindness, kidney failure, and lower-extremity amputations.

For many diabetics, injections are just a part of life – they require multiple injections per day.

## How to use droplet® pen needles:



Patients should remember to rotate injection sites, according to applicable insulin delivery recommendations.<sup>5</sup>

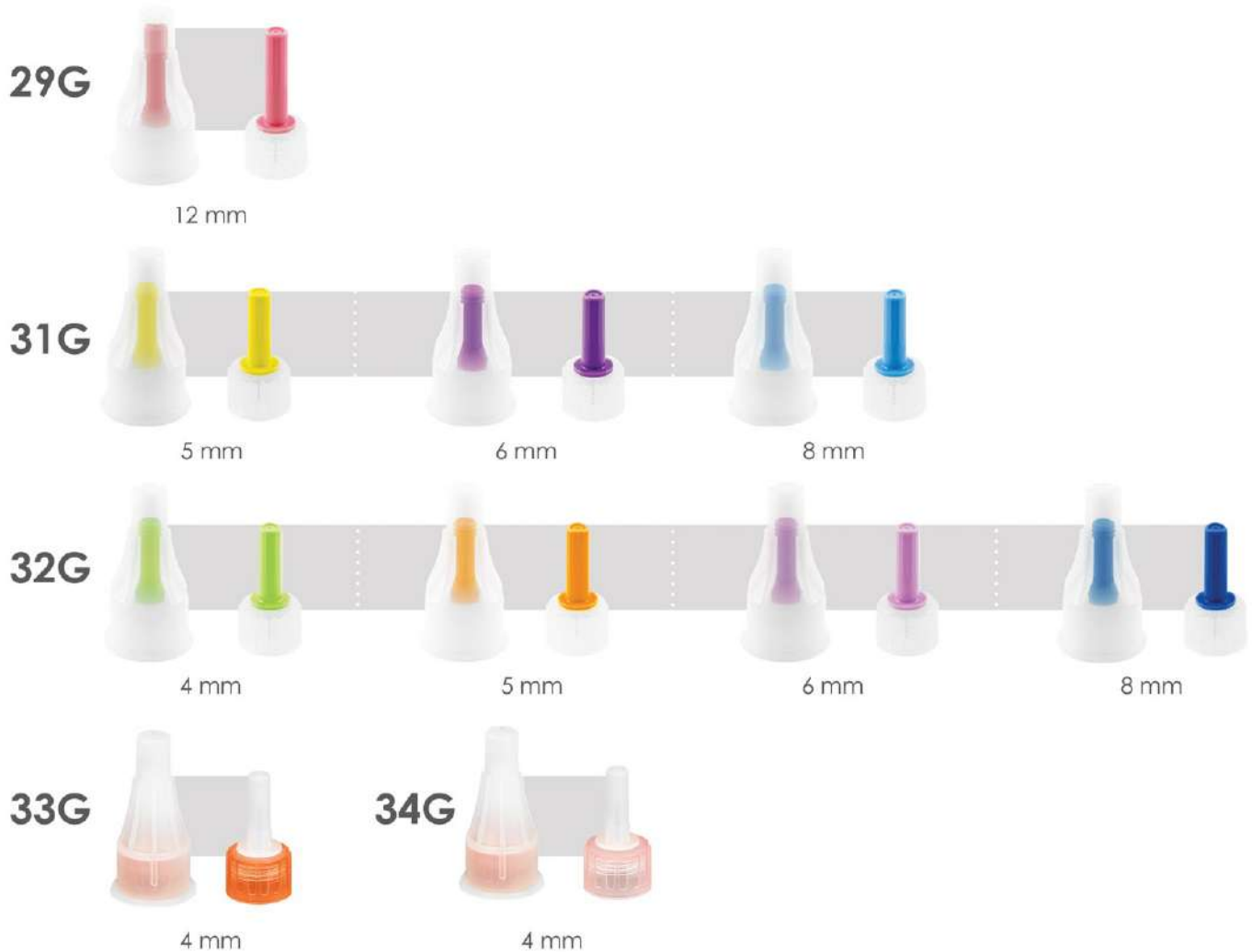
Droplet® pen needles are sterile and for single use only. Sterility is guaranteed if the needle seal is unbroken.

Remember! Droplet® pen needles should be used only once and disposed of in a sharps container.

### Re-usage can:

- lead to needle breakage<sup>6</sup>
- cause lipohypertrophy<sup>5</sup>
- dull or bend the tip, causing bleeding, bruising, or scarring<sup>5,7</sup>
- increase the risk of the needle breaking off in the skin<sup>6</sup>
- increase the risk of infection because the needle is no longer sterile<sup>7</sup>

## Available in ten versions:



droplet<sup>®</sup> **pen needles** are compatible with most pens available on the market, for more information visit: [www.htl-strefa.com](http://www.htl-strefa.com)

### References:

1. HTL-STREFA S.A. Data on file. Type 810 DROPLET<sup>®</sup> insulin pen needles perception among patients with diabetes in four european countries. PMR Research 2014-2015
2. HTL-STREFA S.A. Data on file Comparative study - T0V Rheinland 2015
3. Præstmark KA, Jensen ML, Madsen NB, Kildegaard J, Stallknecht BM, Pen needle design influences ease of insertion, pain, and skin trauma in subjects with type 2 diabetes, *BMJ Open Diabetes Res Care*. 2016; 4(1): e000266.
4. HTL-STREFA S.A. Data on file. Product specification.
5. Frid AH, Kreugel G, Grossi G, et al. New insulin delivery recommendations. *Moyo Clin Proc*. 2016;91 (9):1231-1255.
6. Diabetes.co.uk. Reusing Insulin Pen Needles, [www.diabetes.co.uk/insulin/reusing-insulin-pen-needles.html](http://www.diabetes.co.uk/insulin/reusing-insulin-pen-needles.html) [printed on 2019-04-12]
7. American Diabetes Association. Insulin Administration, *Diab Care*, Jan 2004; 27, Suppl. 1

**HTL-STREFA S.A.**  
ul. Adamówek 7  
95-035 Ozorków  
info@htl-strefa.pl  
www.htl-strefa.com

[www.mtdglobal.com](http://www.mtdglobal.com)

**HTL** STREFA  
high tech lab  
a company of MTD Group

**MTD**  
Medical Technology and Devices

CE 0197

CE mark refers to the product  
not to the brochure

810/All/04/2026  
Made in Poland