

Safe Simple Soft Smart

STERILE, SINGLE-USE, SAFETY PEN NEEDLES



intended for use with **pen injector devices**
for the injection of drugs

Product intended use

DropSafe® safety pen needles are sterile, single-use safety needles intended for use with pen injector devices for the injection of drugs. **DropSafe®** safety pen needles can be used by healthcare professional users and lay users.

Product Features

Safety⁴

- Safety before and after injection
Needle safely contained behind shield, preventing accidental exposure.
- Lock-out confirmation
Red stripe appears when the needle is used and locked out.

Ease of use

- DropSafe® safety pen needles work with most pen injectors available on the market.¹
- Just twist on, inject and dispose.

Comfort

- Special and unique “in-house” lubrication method – Droplicon™ designed for smooth injection.⁷
- Hidden needle
The needle remains hidden from the view, which may increase patient comfort.³

Accuracy

- Needle viewing window
For easy confirmation of drug flow (priming).²
- Thin wall (31G) may allow an easier and quicker injection of the insulin, which can be of clinical relevance.⁷



Sharps injuries expose healthcare workers to blood-borne pathogens. According to data published by the Centers for Disease Control and Prevention almost 400,000 injuries caused by sharps medical devices appear every year.⁶

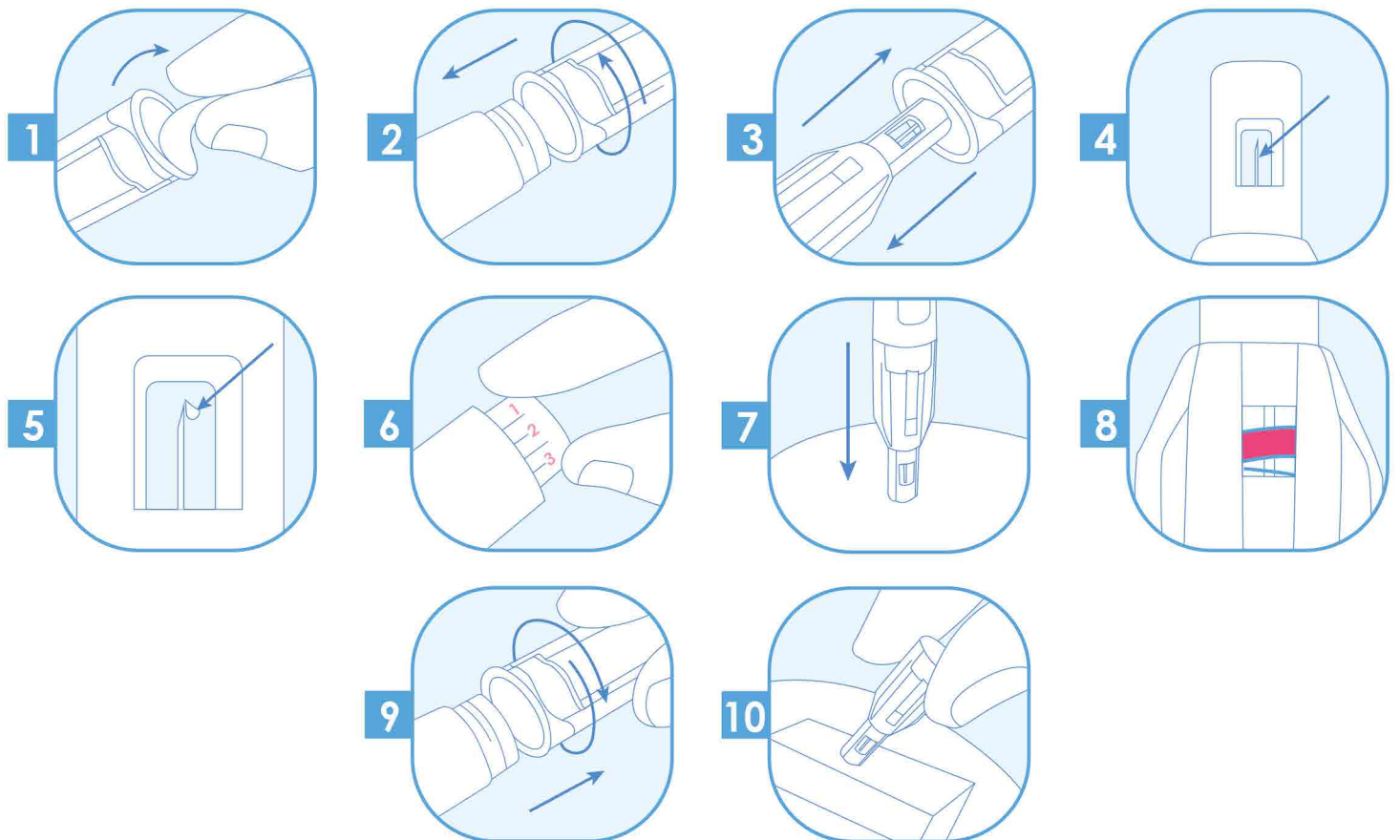
Sharps injury - facts

"Over 80% of needlestick injuries can be prevented with the use of safer needle devices, which, in conjunction with worker education and work practice controls, can reduce injuries by over 90%!"⁵

HTL-STREFA is committed to manufacturing safety products designed to reduce or minimize the risk of exposure to blood-borne pathogens.

DropSafe® safety pen needles are sterile, single-use needles intended for professional healthcare users and lay users. DropSafe® safety pen needles have special features preventing sharps injury incidents. Before an injection needle is safely covered behind the shields, and after use is automatically locked - which reduces the risk of an exposure incident and prevents a sharps injury.

How to use DropSafe®:





DropSafe® safety pen needles are sterile, single-use safety needles intended for use with pen injector devices for the injection of drugs. **DropSafe®** safety pen needles can be used by healthcare professional users and lay users.

Available in three versions:



Safety Pen Needles

31G x 1/4"
0,25 mm x 6 mm



Safety Pen Needles

31G x 5/16"
0,25 mm x 8 mm



Safety Pen Needles

31G x 3/16"
0,25 mm x 5 mm

References:

1. HTL-STREFA S.A. - data on file - Type 820 compatibility with pen injectors.
2. HTL-STREFA S.A. - data on file - QUALITATIVE STUDY ON SAFETY PEN NEEDLES - FOCUSED GROUP INTERVIEWS WITH NURSES IN SPAIN, PMR. 20 August 2018.
3. Tandon N, Kalra S, Balhara YP, Baruah MP, Chadha M, Chandalia HB, et al. Forum for injection technique and therapy expert recommendations, India: The Indian recommendations for best practice in insulin injection technique. Indian J Endocr Metab 2017;21 :600-17.
4. HTL-STREFA S.A. - data on file - FINAL REPORT - SIMULATED CLINICAL USE TESTING ON THE DROPSAFE SAFETY PEN NEEDLE. Version 1.0, 17 January 2017.
5. https://www.who.int/occupational_health/activities/1_anaim.pdf (print date on 2019-04-12).
6. <https://www.cdc.gov/niosh/stopsticks/sharpsinjuries.html> (printed on 2019-04-12).
7. Siegmund T., Blankenfeld H., Schumm-Draeger PM. Comparison of usability and patient preference for insulin pen needles produced with different production techniques: „thin-wall” needles compared to „regular-wall” needles: an open-label study. Diabetes Technology & Therapeutics, Vol. 11, No. 8.

Poland



HTL-STREFA S.A.
ul. Adamówek 7
95-035 Ozorków
info@htl-strefa.pl
www.htl-strefa.com



Find us on Facebook
www.facebook.com/HTLSTREFA

USA

HTL-STREFA, Inc.
3005 Chastain Meadows Pkwy
Suite 300
Marietta, GA 30066

+1 770 528 0410
info@htl-strefa.com
www.htl-strefa.com



820/AII/04/2021
Made in Poland

CE 0344

CE mark refers to the product
not to the brochure